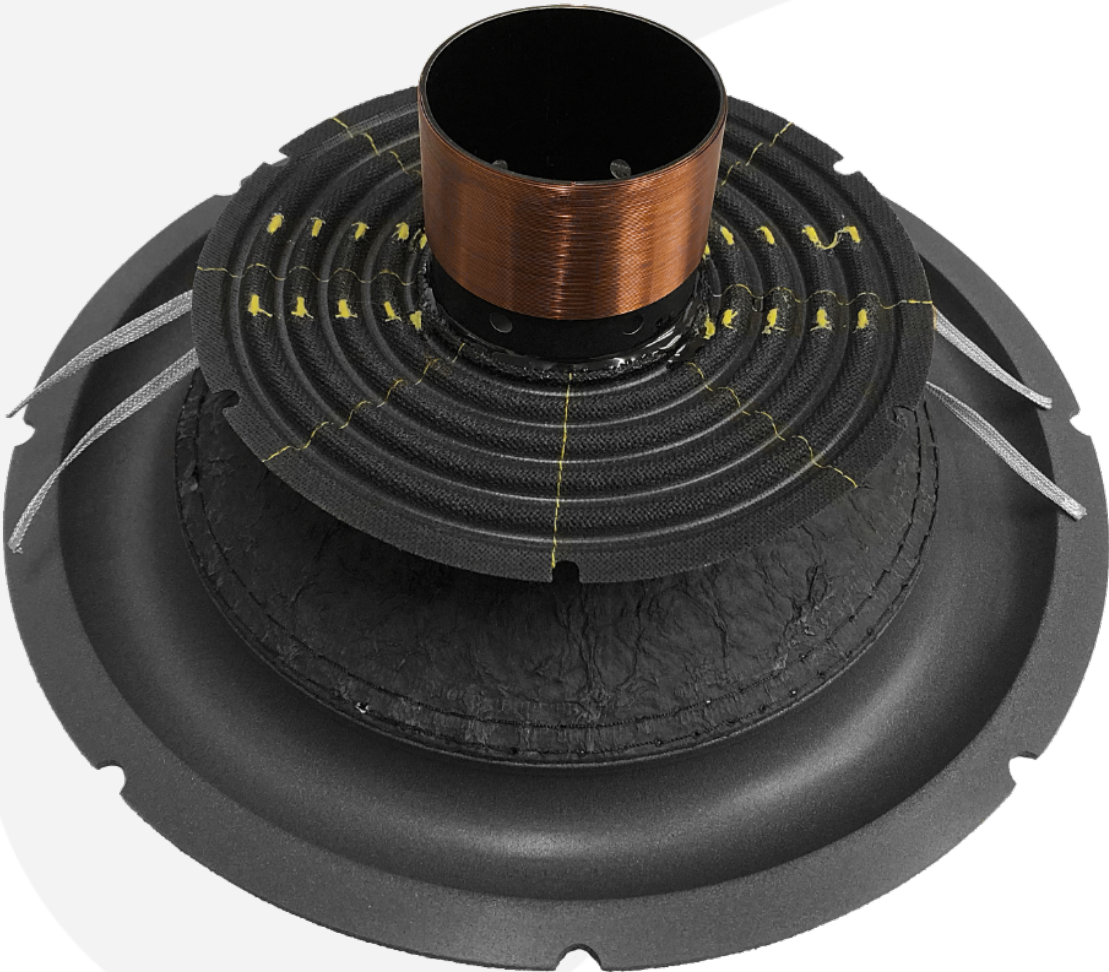


SPL12.2S 2x40hm Subwoofer Recone Kit



**SUPPORT
CREW**



Instruction manual

Reconing a subwoofer is a procedure that should be attempted by persons familiar with the job. It is not difficult but has some pitfalls which could cause damage to the speaker or the recone kit if the work is not approached correctly. We have plans to place a full guide here shortly to illustrate procedure. For now, if in doubt, please speak with your dealer directly before attempting the work.

