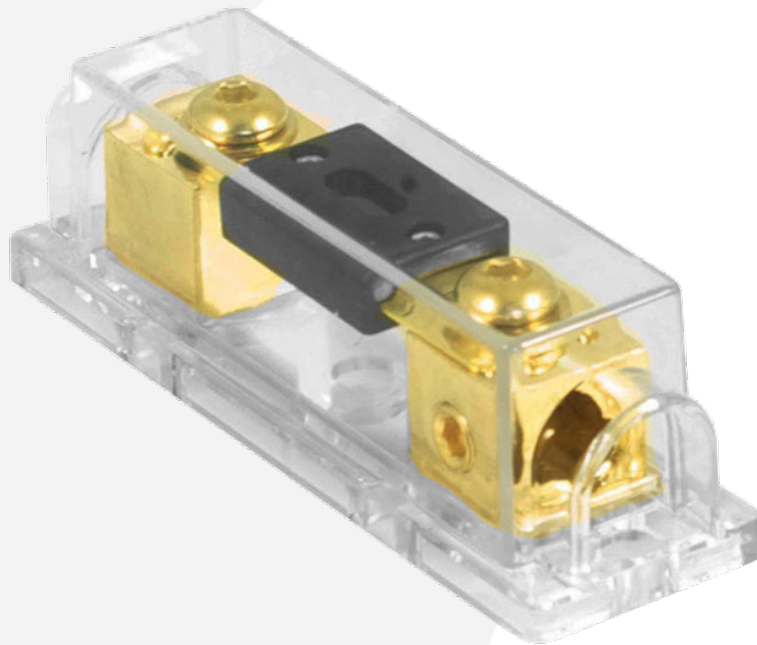


# **PFH.1 Gold Plated Fuseholder With 200A ANL Fuse 0/1AWG Inputs**



***SUPPORT  
CREW***



## **Instruction manual**

Thank you for choosing Bassface. From the simplest connector to our top of the range amplifier - every element of these products has been designed to give you the best possible performance for your money. Please take the time to read these instructions carefully as they contain useful and important information. Modern high power audio systems can generate voltages at the speaker similar to mains operated equipment - for some reason everyone seems to ignore or forget this. Your wiring needs to be good to be safe. Please remember this and take your time. Please exercise caution when setting volume levels - powerful audio equipment can easily produce enough sound to permanently damage hearing. Remember that audio competitors use ear protection when operating and competing. Do remember that incorrect installation or abuse is not covered under warranty - please make sure that your installation and any partnered product is suitable and compatible. If you are unsure please seek qualified advice before proceeding. Always use appropriate hand and eye protection when working with tools, and always work within your capabilities as an installer. We offer a 12 month manufacturer warranty via your distributor or retailer. Please retain your purchase receipt as proof of purchase. Please note that Bassface operates a policy of continuous product development and we reserve the right to change specification without prior notice. You can follow our process on our website by reviewing the version history information.

Please note that we sometimes include information inside these manuals which we feel is of potential value to the client on related subjects such as conversion charts, capacitance values or wiring diagrams. Please feel free to copy any of this information since it is in the public domain.

